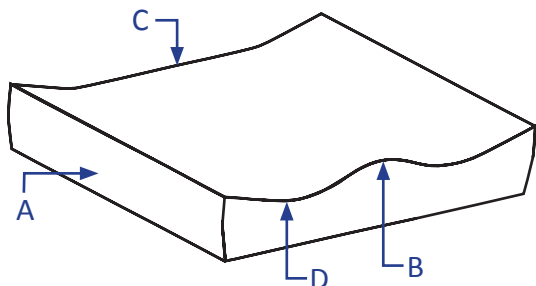


# Elite Cushion



The Prism Elite Cushion™ was designed for users that require moderate postural support and offers gentle contours helping to promote correct seating posture. A top layer of soft, comfortable visco foam, along with the visco and medium density polyurethane foam, offers pressure distribution and relief. We truly have designed an Elite cushion.



#### CUSHION THICKNESS

- A- Height at adductor = 4"
- B- Height at abductor = 4 1/2"
- C- Height at rear IT = 3"
- D- Leg Trough = 3"

Prism Series Cushion		STYLE: Elite	
Stock Sizes – Same Day Shipment			
Part Number	Size W x L	Part Number	Size W x L
EC1616	16" x 16"	EC1818	18" x 18"
EC1618	16" x 18"	EC2016	20" x 16"
EC1816	18" x 16"	EC2018	20" x 18"
Non-Stock Sizes – Shipment within 3 business days			
Part Number	Size W x L	Part Number	Size W x L
EC1620	16" x 20"	EC1720	17" x 20"
EC1716	17" x 16"	EC1820	18" x 20"
EC1718	17" x 18"	EC2020	20" x 20"
Custom Sizes - Shipment within 7 business days			
Part Number		Size W x L	
ECCUS		Custom	

**HCPCS E2603 / E2604**

# Elite Cushion



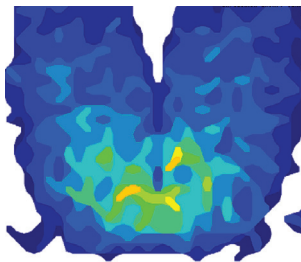
Visco Foam, contours to users body and aids in positioning



Cushion Layers and Inner Cover

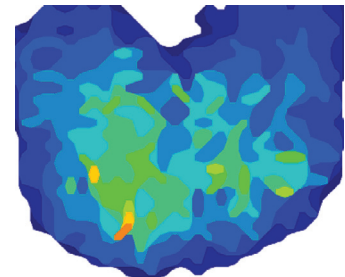
## Product Highlights:

- ✓ Standard water proof outer cover
- ✓ Waterfall front edge for foot propelling
- ✓ Lightweight cushion
- ✓ Core layer of visco-elastic foam (memory foam) to provide comfort
- ✓ Non-slip bottom on washable incontinent cover
- ✓ Promotes moderate postural support
- ✓ Slight medial thigh support for positioning
- ✓ 4-way stretch, water resistant inner liner
- ✓ 4-way stretch, breathable outer cover
- ✓ **Product Weight:** 2.8 lbs (18"W x 16"L)
- User Weight:** 250 lbs
- Warranty:** Two (2) years limited on cushion and 90 days on cover.



Pressure Map	Elite
Weight	125 Lbs/57 Kg
Duration	1 hr
Average Pressure	30 mmHg

Pressure Reading Scale in mmHG



Pressure Map	Elite
Weight	200 Lbs / 91 Kg
Duration	1 hr
Average Pressure	31 mmHg

Slight medial thigh support for added comfort and leg positioning

