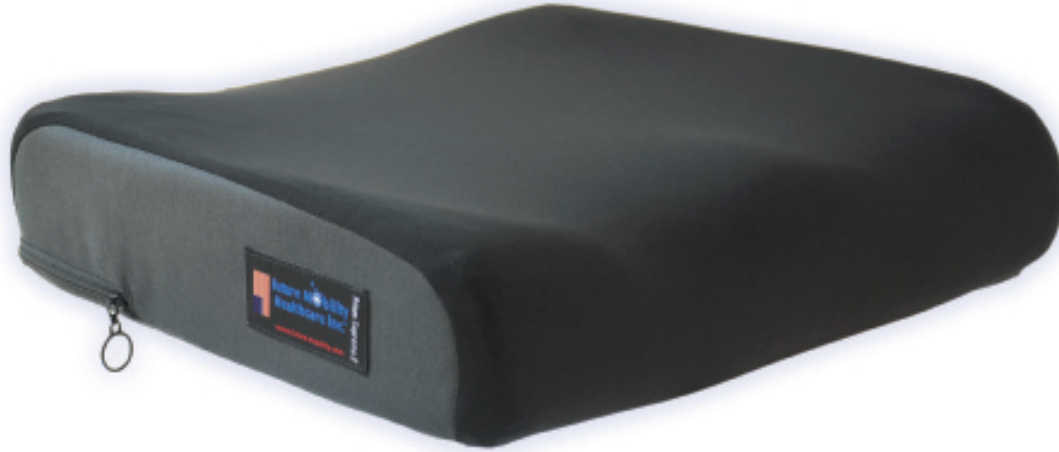
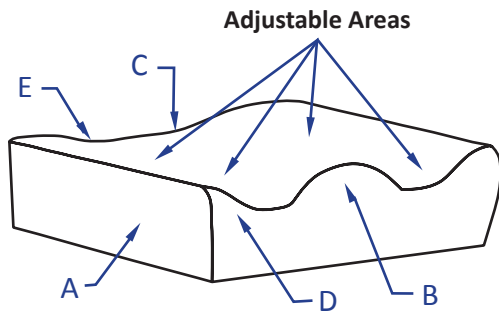


Supreme Air Cushion



The **Prism Supreme Air™** Cushion was designed for users that require moderate postural support and similar to our original Supreme Cushion, offers excellent pressure distribution. Using inflatable air inserts allows the user to adjust the seat cushion in four different areas for proper weight distribution and comfort. Using our anatomically designed Supreme Air Cushion allows the user to keep superior pelvic stability and leg positioning, with air inserts for pressure relief. Supreme comfort, supreme positioning and supreme pressure relief – that’s the Prism Supreme Air Cushion!



CUSHION THICKNESS

- A-** Height at adductor = 5"
- B-** Height at abductor = 5"
- C-** Height at rear IT = 3 1/4"
- D-** Leg Trough = 3 1/4"
- E-** Height at rear trochanter = 4 1/4"

Air Inserts = Adjustable areas

Prism Series Cushion		STYLE: Air Supreme	
Stock Sizes – Same Day Shipment			
Part Number	Size	Part Number	Size
SCAIR1414	14" x 14"	SCAIR1816	18" x 16"
SCAIR1416	14" x 16"	SCAIR1818	18" x 18"
SCAIR1616	16" x 16"	SCAIR1820	18" x 20"
SCAIR1618	16" x 18"		
Non-Stock Sizes – Shipment within 3 business days			
Part Number	Size	Part Number	Size
SCAIR1516	15" x 16"	SCAIR1916	19" x 16"
SCAIR1518	15" x 18"	SCAIR1918	19" x 18"
SCAIR1620	16" x 20"	SCAIR1920	19" x 20"
SCAIR1716	17" x 16"	SCAIR2016	20" x 16"
SCAIR1718	17" x 18"	SCAIR2018	20" x 18"
SCAIR1720	17" x 20"	SCAIR2020	20" x 20"
Custom Sizes - Shipment within 7 business days			
Part Number		Size	
SCAIRCUS		Custom	

HCPCS E2624 / E2625

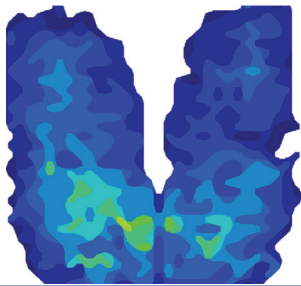
Supreme Air Cushion



Cushion Layers and Inner Cover

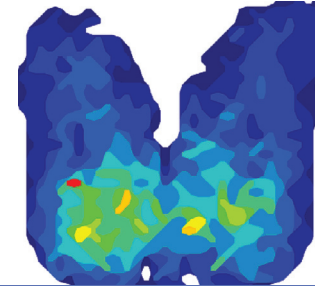
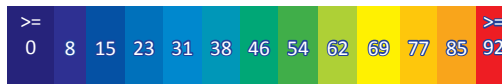
Product Highlights:

- ✓ Waterfall front edge for foot propelling
 - ✓ 4 Air inserts for optimum comfort and positioning
 - ✓ Core layer of visco-elastic foam (memory foam) to provide comfort and pressure reduction
 - ✓ Offers excellent pressure distribution
 - ✓ Inflatable air inserts allows the user to adjust the cushion in 4 different areas
 - ✓ Allows for superior pelvic stability and leg positioning
 - ✓ 4-way stretch, water resistant inner liner
 - ✓ 4-way stretch, breathable outer cover
- ✓ **Product Weight:** 6.55 lbs (18"W x 16"L)
User Weight: 250 lbs
Warranty: Two (2) years limited on cushion and 90 days on the cover



Pressure Map	Air Supreme
Weight	125 Lbs/57 Kg
Duration	1 hr
Average Pressure	26 mmHg

Pressure Reading Scale in mmHG



Pressure Map	Air Supreme
Weight	200 Lbs/91 Kg
Duration	1 hr
Average Pressure	30 mmHg

