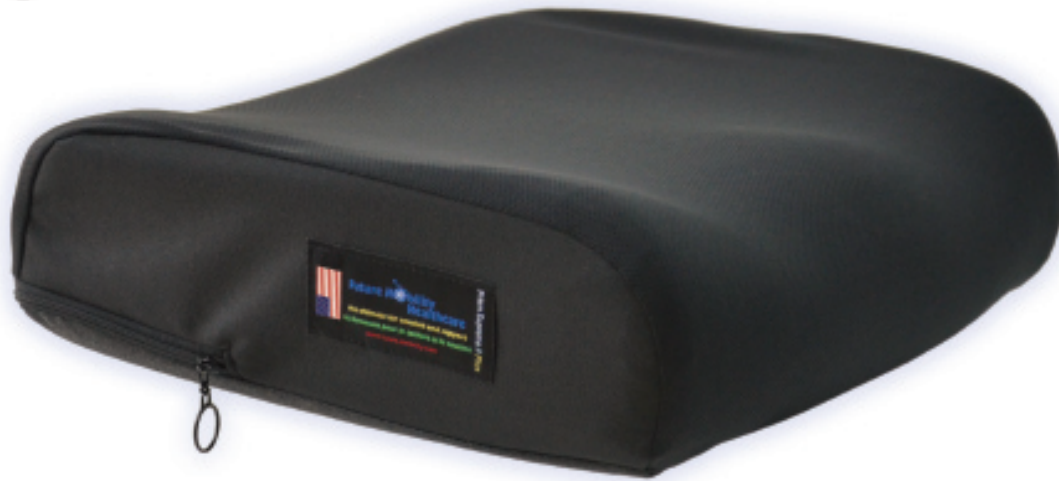
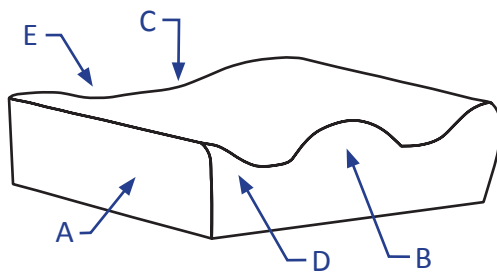


Supreme // Plus Cushion



The Prism Supreme // Plus™ Cushion was designed for users weighing up to 350lbs and requiring high positioning support. The anatomically designed, firm polyurethane layer, with its aggressive leg troughs and abductor contouring provides superior pelvic stability and leg positioning. A base layer of pressure relieving visco-elastic foam under the IT's, allows for excellent immersion for bony prominences. Supreme comfort, supreme positioning and supreme pressure relief – that's the Prism Supreme II Plus!



CUSHION THICKNESS

- A- Height at adductor = 5"
- B- Height at abductor = 5"
- C- Height at rear IT = 3 1/4"
- D- Leg Trough = 3 1/4"
- E- Height at rear trochanter = 4 1/4"

Prism Series Cushions STYLE: Supreme // Plus

Stock Sizes – Same Day Shipment

Part Number	Size W x L	Part Number	Size W x L
SCP1414	14" X 14"	SCP1816	18" X 16"
SCP1416	14" X 16"	SCP1818	18" X 18"
SCP1616	16" X 16"	SCP1820	18" X 20"
SCP1618	16" X 18"		

Non-Stock Sizes – Shipment within 3 business days

Part Number	Size W x L	Part Number	Size W x L
SCP1516	15" x 16"	SCP1916	19" x 16"
SCP1518	15" x 18"	SCP1918	19" x 18"
SCP1620	16" x 20"	SCP1920	19" x 20"
SCP1716	17" x 16"	SCP2016	20" x 16"
SCP1718	17" x 18"	SCP2018	20" x 18"
SCP1720	17" x 20"	SCP2020	20" x 20"

Custom Sizes - Shipment within 7 business days

Part Number	Size W x L
SCPCUS	Custom

HCPCS E2607 / E2608

Supreme // Plus Cushion

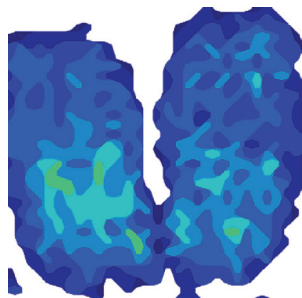


Visco Foam, contours to users body and aids in positioning

Cushion Layers and Inner Cover

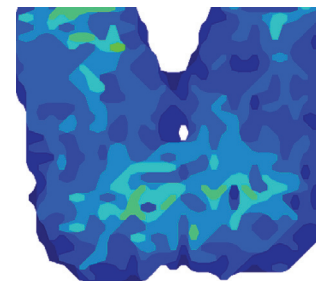
Product Highlights:

- ✓ High density, contour cut layered foam for a consistent, long lasting product
- ✓ Cane cut in rear to allow for correct placement in wheelchair and proper seat depth
- ✓ Radius cut to match shape of back upholstery
- ✓ Layer of visco foam along the bottom for further pressure relief under IT's (Ischial Tuberosity)
- ✓ Supreme pressure relief
- ✓ Standard 4-way stretch, water resistant inner liner
- ✓ 4-way stretch, breathable outer cover
- ✓ **Product Weight:** 4 lbs (18"W x 18"L)
Capacity: 350 lbs
Warranty: Two (2) years limited on cushion and 90 days on the cover



Pressure Map	Supreme // Plus
Weight	125 Lbs/57 Kg
Duration	1 hr
Average Pressure	25 mmHg

Pressure Reading Scale in mmHG



Pressure Map	Supreme // Plus
Weight	200 Lbs/91 Kg
Duration	1 hr
Average Pressure	30 mmHg

